

Paths for All

AVON & BOURNE



CIRCULAR WALK

LIDBURY CAMP WALK

6.5 MILES/10.5 KM

2 - 3 hours

Mainly open grassland

UNSUITABLE FOR WHEELCHairs & BUGGIES

Two pubs:

The Swan, Enford

The Red Lion, East Chisenbury

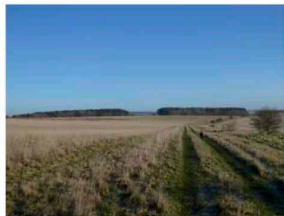


Avon & Bourne

One of a number of watercourses to bear the name (which of course means simply 'river'), the Salisbury or Hampshire Avon has two sources – one near Devizes, the other just east of Pewsey – which meet at Upavon and flow south through Enford and Netheravon, then via Amesbury and the Woodfords to Salisbury. To the east, and running roughly parallel from its source near Burbage, the River Bourne cuts through the chalk hills at Collingbourne Kingston, then south through Tidworth and the Winterbournes to meet its sister stream near Salisbury. There, along with the Nadder, Wylde, and Ebbel, the rivers combine and as the Avon flow on into the English Channel near Christchurch.

The coast lies many miles ahead of the waters that pass through our area. Here the two rivers are in their relative infancy, meandering gently past villages and water meadows, through soft drowsy valleys flanked by chalk hills and, to the west, the plateau of Salisbury Plain. Making full use of local knowledge and experience, this series of leaflets presents walks, carefully prepared to cater for a full range of capability and stamina, designed to show to full advantage the natural beauty, wildlife, history, and hidden aspects of this special area.

Paths
for All
supported by
Wiltshire Council
Where everybody matters



Ridge-line above Rainbow Bottom heading for 2



Footpath approaching East Chisenbury 8



The Lidbury Camp enclosure and its associated trackway provide important evidence of land use and agricultural practices in the prehistoric, Romano-British and medieval periods. The importance of the monument is considerably enhanced by the inclusion of a prehistoric funerary monument considered to be nationally important in its own right.

The Scheduled Monument comprises a possible barrow together with Iron Age and Romano-British occupation associated with Lidbury Camp and its related trackways. The earthworks are fairly slight with ditches extending east and south-west. Excavation in 1914 of an entrance identified two phases of occupation and produced Iron Age and Romano-British material.



Start at Enford church car park. To undertake the walk in an anti-clockwise direction, walk east over the bridge and left towards East Chisenbury.

Follow the road to Littlecote Farm and after approximately half a mile take the switchback track on the right-hand side up the hill (1). Stay on the Public Right of Way heading for the southern corner of the predominantly conifer woodland on the horizon (2).



From the southern edge of this woodland the walk runs north-east, but without prominent tracks for guidance. It is marked by posts and from each post the next can be seen by careful observation.

Pick up the deeply rutted track on the north edge of the Tumulus and follow it down to the main roadway/trackway heading north-east. After a quarter of a mile take a left-hand fork running up a valley bottom (3).

Follow the valley bottom up the hill to the prominent track crossroads at Littlecote Down (4).

Take the rutted track heading south-west running south of the disused Pit and then through the woodland above Chisenbury Field Barn.

As you emerge from the wood there are some panoramic views over the Avon Valley and to the south west of the Plain. You will see Chisenbury Field Barn nestled in a fold in the ground to your south. Remain on this obvious path until the crossroads in the valley bottom (5).

Head south along the valley bottom, crossing over a prominent metalled track and picking up a PROW sign directing you along a grassed footpath running south-west. Follow this until you pick up another sign directing you almost due north up the hill.

The next footpath sign (7) directs you west once again along a well-marked path that brings you out at the back of the Red Lion pub in East Chisenbury.

From here follow the road back through East Chisenbury to Enford and your start point at the Church carpark.